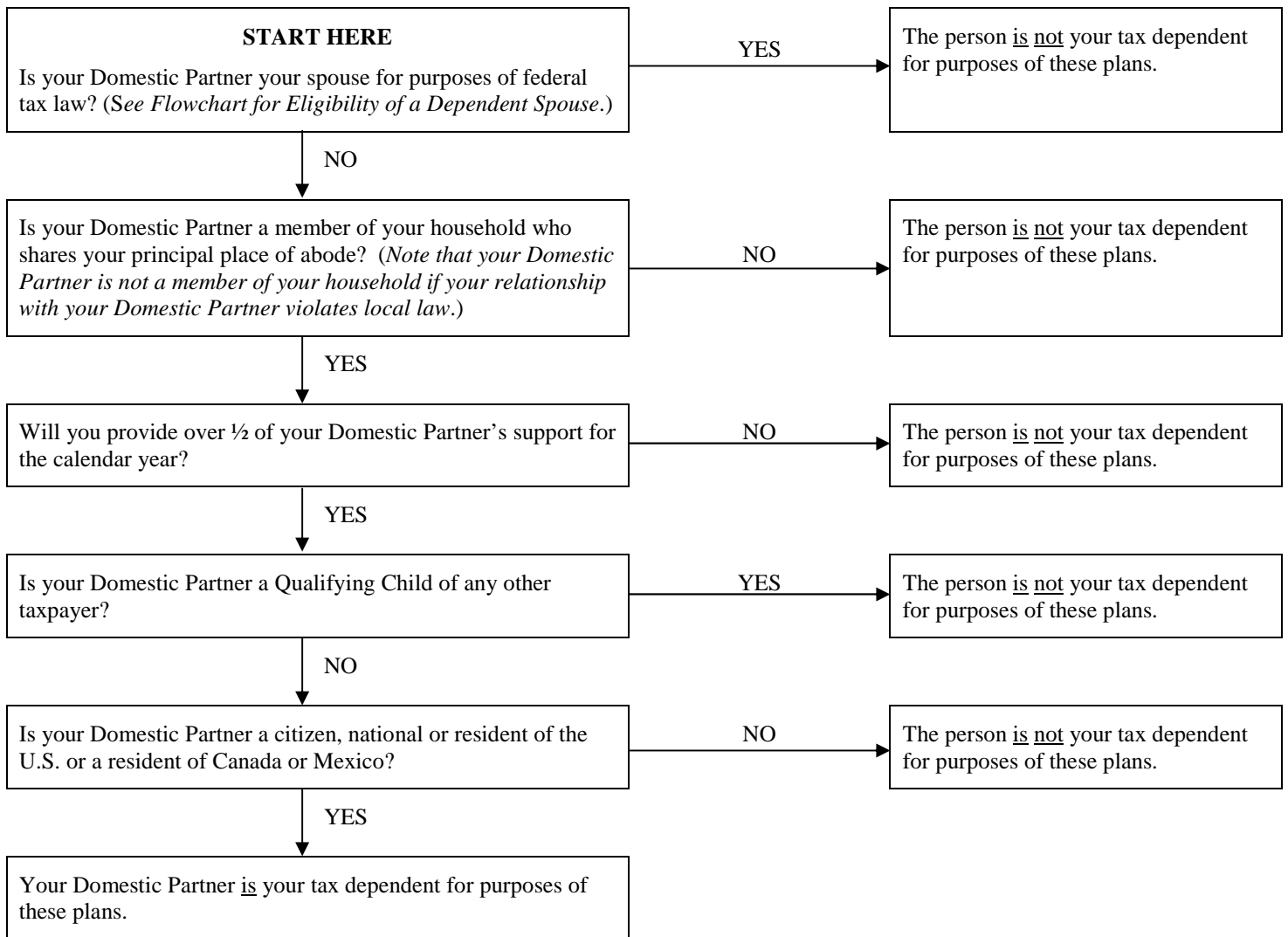


FLOWCHART FOR DEPENDENT STATUS OF A DOMESTIC PARTNER



- *If your Domestic Partner is your tax dependent for purposes of these plans, then you should put a check in the box next to "Yes" on the Declaration of Tax Status form.*
- *If your Domestic Partner is not your tax dependent for purposes of these plans, then you should put a check in the box next to "No" on the Declaration of Tax Status form.*